

What's Inside:

Page 2

Assignments and Announcements

Page 3

Fines, Happy Dollars, Hospitality, Social Events, Interclubs, Looking Ahead

Page 4

Club Calendar and Weekly Numbers

Page 5

More Announcements, Note to Readers

Page 6

Club Info and Thanks to Our Advertisers

Meetings...

After next week's meeting on May 2, the By-laws Committee will meet in Ned's Place at 1:15pm.

Next Week's Program...

May 2—BIG DAY! Club College Scholarship and Campership Awards. Master of Ceremonies: **Claire Dahl** (Club Member, former AP teacher & Key Club Administrator, AA Pioneer HS).

Upcoming Programs...

May 9—Surgical Advancements in 3D Body Parts. Speaker: Dr. Glenn Green, U-M C.S. Mott Children's Hospital. Introduced by **Sheridan Springer**.

May 16—Club Officer/Board Member Election (2016-17) (Past Presidents).



Kiwanis®

Kiwanis Club of Ann Arbor

Ann Arbor News 2015 Deal of the Year Retail Award Winner

Volume 7, Issue 30

April 25, 2016

Today's Program...

What Does Culling Deer Cure? How Best to Achieve a Healthy and Safe Number of Deer?



Maurita Peterson Holland

Dale Leslie introduced today's speaker, Maurita Peterson Holland, University of Michigan (UM) Associate Professor Emerita, School of Information (SI) and a Board Member of the Stewardship Network, whose mission is connect, equip, and mobilize people and organizations to care for the land and water in their communities.

Today's program began with how nature organizes itself and the important relationship between prey and predator. During the last 200 years as humans populated this country we removed many predators, thus changing the prey and predator relationship among native animals. One result is that many of deer's predators were removed. Deer overabundance has changed the ecosystem of Michigan. Currently, there are 1,750,000 deer in Michigan with the largest increase in the southern counties. A healthy deer herd can double in size in one year. Deer live for 10-15 years. A single deer consumes about 1.5 tons of plant material each year. This impacts native butterflies, bees, small mammals, amphibians, and certain birds. Their food preferences allow the growth of invasive garlic mustard and Japanese barberry, which inhibit the next generation of forest trees such as oak and native wildflowers.

In August 2015, City Council approved Ann Arbor's deer management program for the next four years. The City contracted with the US Department of Agriculture Wildlife Services whose marksmen use suppressed firearms to cull deer from designated city parks and nature areas. According to the City's website, the goal of the deer management program is to decrease the city's deer population "in order to reduce deer-human negative interactions and support biological diversity in natural areas". A recent study in Ann Arbor's Bird Hills Nature Area found deer browsing damage in 80 percent of the tree saplings.

Critics of the cull have asked for more information. How many deer are too many? What about the use of non-lethal methods of deer control? In the future, City Council agreed to explore non-lethal methods. Yet, currently contraceptive drugs for deer are illegal in Michigan and difficult to administer. Surgical sterilization can be expensive and the evidence of the effectiveness of both of these non-lethal methods on the total deer herd is in question. Michigan DNR prohibits the transport of deer herds from one area of the state to another because of concerns with disease and adjustment. In Michigan we have statewide policies on controlling deer in rural areas, but not in urban areas. In January 2016 the City received a second lawsuit seeking to stop the deer cull.

What do you think? Voice your opinion by going online to be part of the citizen survey at A2 Open City Hall at this [link](#) and take the "Deer Management Program Citizen Survey". This survey is open through this Friday, April 29, 2016.

The speaker recommended three books, *Deerland, America's Hunt for Ecological Balance and the Essence of Wildness* by Al Cambronne; *A Sand County Almanac and Sketches Here and There* by Aldo Leopold; and *Nature Wars*, by Jim Sterba. An additional resource is, "Washtenaw Citizens for Ecological Balance" at this [link](#).





Kiwanis Club of Ann Arbor
CHARTERED IN 1921

Officers and Directors

President:

Betsy Ford

President-Elect:

Alan Burg

Treasurer:

Eloise Lavin

Secretary:

Kathie Wilder

Immediate Past-

President:

John Goff

Board Members:

Ray Argyle
Kathy Barden-Perlberg
Claire Dahl
George Gilligan
William Hampton
Joseph Medrano
William Robb
Kenneth Shaw
Richard Smit
Ellen Webb



Newsletter:

Editor

Alan Burg

Photos

Bill Robb

Publisher

John Kidle



Do you have news for the newsletter, or are you interested in advertising? Contact Publisher, John Kidle, at jkidle@gmail.com.

ASSIGNMENTS for the COMING WEEK:

Officer of Day KCD	Jim Blomquist
Antiques	Rose Marie Barhydt
Beds & Garden	Kathy Stroud and Mike Anglin
Dockers	We need dockers
Sorters	We need sorters
Housewares	Dan Burroughs, Doug Hanton, and Fred Miller
Men's Clothing	Jim Couch and Dave LaMoreaux
Books/Records	Bill Heller
Office & Medical	Jim Mattson
Lamps	Dennis Powers
Electronics	Bill Robb
KCW	Friday—Ray Argyle, Marianne D'Angelo, Nick Dever, Griff Dick, Dave Drake, George Gilligan (OD), Eloise Lavin, Glenda Maten, Ralph Maten, Sheridan Springer, Carla Summers, Ellen Webb, Marcia Wells, and Jim Wight Saturday—Bob Barden, Gordon Beeman (OD), Kelly Bertoni, Marianne D'Angelo, Nick Dever, Griff Dick, Al Engerer, Gary Fulton, Deb Jones, Margaret Krasnoff, Gerry Luke, Amy Price, Mark Reed, John Sampsele, Cliff Sheldon, and Ellen Webb
Vouchers	For Thursday, April 28: Ellen Webb, Matt Chaiken, Sally Lamkin, Garry Evans, Jean Robinson, and Carl Williams
Invocation	Jane Talcott (May 2)
Greeters/Attend.	D. McNab-Cattel (A), J. Kidle, J. Sampsele, B. Tasch, and J. Wight
Hospitality	Jane Talcott
Cashier	Martha Petroski

Guests at Our Club...

Garry Donner introduced four guests from Circle K; Nicole Potchen, Chiara Sackellares, Taylor Sullivan, and Kathleen Hurley. **Dale Leslie** introduced guest, David VanNagenen.

Announcements...

- Next Monday, May 2nd will be our annual Scholarship Day with 40 scholarships (\$40,000) to be awarded to high school Seniors. Plan to be here to celebrate.
- The annual Election of our Club's Officers and Board members is scheduled for Monday, May 23, 2016 as part of the regularly scheduled Monday noon meeting.
- **Ellen Webb** shared that your help is needed starting in May to assist with our Kiwanis Voucher Program. It is scheduled each Thursday at KCW. Up to ten families need help with shopping as part of the Voucher Program. No training is needed, but if you would like to attend a training class with the families' social workers, the next training session is this Thursday 10:30am at KCW. We need at least six Kiwanians on each Voucher Thursday for a couple of hours. This program is a direct "Hands On" activity of this Club with this year's target of providing \$40,000 of items to families who are in need across our community.
- Our Sales Management Oversight Committee (SMOC) requested members and volunteers be aware of the need for additional help from now through May for help at KCW with getting items from the warehouse area and onto the sales floor. This need is because our paid staff will be on the road each day picking up merchandise and many special pick-ups from the UofM as students are leaving town. Also, at KCD both Office Supplies and Housewares need additional sorting and sales support.
- **Max Ziegler** shared information and encouraged us to attend the latest musical at the Encore Theater in Dexter, called *Always Patsy Cline*. Max also provided a great World War II poster of Rosie the Riveter to our own "Rosie" **Claire Dahl**.

Fines:

George Gilligan proposed a fine to all folks who were sitting at a table with less than four Circle K members. (All four were at his table.) Passed. **Ron Gardner** then proposed a fine to include George. Passed.

Happy Dollars:

Dale Leslie pleased that **William Hampton** is a member of this Club. **Doug Hanton** happy that he saw Past President Dick Broadband at church and that Dick is thankful that **Dale Leslie** keeps him current with the news from Kiwanis. **Gordon Beeman** happy to announce his 1st grandchild, born April 15, her name is Sydney. **Joe Medrano** happy that Spring has arrived. **Garry Donner** pleased that he has less back pain.

Stuff You Should Know...**Hospitality News:**

Max Ziegler reported former Kiwanian Harry Kenworthy's wife, Mary, has died. Their daughter Janet Kenworthy Meddaugh was also a club member for a brief period. Former member, Henry Klose's wife, Jan, has died. Volunteer Fran Lyman fell last week and broke her hip. Max distributed a birthday card for members to sign for former member Bud Katz's widow, Betty, who was a loyal sale worker and just celebrated her 90th birthday. Club members and their guests are invited to a brunch in celebration of her birthday at 11am, Saturday, April 30th, at her home at 5906 Bellwether Drive (no gifts please), Travis Pointe.

Social Events:

- **2016 Tiger Trip—Fred Sanchez** on August 6th. Time to sign up with Fred. Food, bus transportation, and a game ticket. Make checks payable to Kiwanis Club of Ann Arbor (not the Foundation). Cost: \$70 per person.
- Tickets for *Mornings at Seven* at the Purple Rose Theater in Chelsea, see **Martha Petroski**. It is for Friday, July 1st and the cost is \$19. In addition, if you want to meet at the Common Grill for dinner ahead of the performance, please let Martha know.

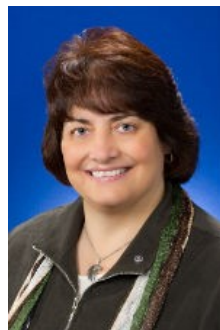
**Morning's
at Seven**
BY PAUL OSBORN

Interclubs:

Dave Drake announced that the next Interclub in May will be in Ypsilanti.

Looking Ahead:

June 13 Program—Kiwanis International President Sue Petrisin (East Lansing Kiwanis Club). Introduced by: **Lt. Gov. Julianne Williams**.



Sue Petrisin

**Kiwanis
Thrift Sale**

Known worldwide as the place for the "funkiest" gift.

Check for Special Items on

craigslist

and



Every Week!

*Since 2004
Over \$2,482,000
in Proceeds from
the Kiwanis
Thrift Sale have
been used to
Benefit Our
Community.*



Lunch Time

*Lunch is served
beginning at 11:30am
Come early... get a
parking spot and extra
time to enjoy the good
food before the
meeting starts at
12:10pm*

April 2016

Sun	Mon	Tue	Wed	Thu	Fri	Sat
					1 Sale & Donations: KCW 9-1	2 Sale & Donations: KCD 9-12 KCW 9-1
3	4 Boy Scouts KCD Donations 9am-Noon	5	6	7 KCD Donations 9-12	8 Sale & Donations: KCW 9-1 <i>Spaghetti Dinner</i>	9 Sale & Donations: KCD 9-12 KCW 9-1 <i>Spring Divisional</i>
10	11 UM Baseball KCD Donations 9-12, <i>Super Inter-club at Chelsea</i>	12	13	14 KCD Donations 9-12	15 Sale & Donations: KCW 9-1	16 Sale & Donations: KCD 9-12 KCW 9-1
17	18 City of Dexter KCD Donations 9am-Noon	19 Board Meeting KCW 7pm	20	21 KCD Donations 9-12	22 Sale & Donations: KCW 9-1	23 Sale & Donations: KCD 9-12 KCW 9-1
24	25 Deer Cull KCD Donations 9am-Noon	26	27 <i>AA Western Spaghetti Dinner</i>	28 KCD Donations 9-12	29 Sale & Donations: KCW 9-1	30 Sale & Donations: KCD 9-12 KCW 9-1

May 2016

Sun	Mon	Tue	Wed	Thu	Fri	Sat
1	2 Scholarships/ Camperships KCD Donations 9am-Noon	3 Board Meeting 7pm	4	5 KCD Donations 9-12	6 Sale & Donations: KCW 9-1	7 Sale & Donations: KCD 9-12 KCW 9-1
8	9 Surgical Advancements KCD Donations 9am-Noon	10	11	12 KCD Donations 9-12	13 Sale & Donations: KCW 9-1	14 Sale & Donations: KCD 9-12 KCW 9-1
15	16 Club Election KCD Donations 9am-Noon	17	18	19 KCD Donations 9-12	20 Sale & Donations: KCW 9-1	21 Sale & Donations: KCD 9-12 KCW 9-1
22	23 UM Website KCD Donations 9am-Noon	24	25	26 KCD Donations 9-12	27 Sale & Donations: KCW 9-1	28 Sale & Donations: KCD 9-12 KCW 9-1
29	30 Meeting Delayed to Tuesday. <i>KCD Donations Closed</i>	31 Local Strategies Addressing Terrorism				



This Week's Numbers

Attendance:

63

Fines:

\$21.18

Happy \$:

\$10

Mott Pot:

\$185.25

Vouchers:

\$1,313

(6 Families)
\$31,790 YTD

Thrift Sale:

KCD:

\$6,192

KCW:

\$5,274

Other:

\$293

TOTAL:

\$11,759

•••The fact that you are taking time to read this indicates a high aptitude for being a newsletter editor. Email John Kiddle at jkiddle@gmail.com immediately to volunteer •••



More News...

Additional Announcements:

- **Dale Leslie** shared that Ann Arbor Western Kiwanis' annual WISD Spaghetti Dinner will be this Wednesday at High Pointe School on Wagner Rd from 5:30 to 7pm. Proceeds support the school.
- **Larry French and Julianne Williams** have raffle tickets to sell for the Kiwanis Foundation of Michigan 50/50 raffle: first prize includes 7 nights in a condo on Maui, Hawaii for two, including airfare, and \$350 gift card, second prize is dinner for two anywhere in Michigan (\$250 gift card). Raffle is limited to 5,000 tickets at \$10 each. Proceeds go to Michigan Kiwanis District and Kiwanis Foundation of Michigan, which provides major funding for programs at four children's hospitals in Michigan.
- Campership Challenge forms available on the tables and from **Jane Talcott or Harry Cross**. For \$250, you can sponsor a child's week at camp. The Cross Foundation will match your \$250. You and your friends can pool your money to reach the \$250 portion. Deadline is July 25.
- The LPGA Volvik Golf Championship will be May 23–29th at Travis Pointe Country Club. There are only 33 official LPGA Tournaments in the world – and now one will be right here in Ann Arbor. The tournament will feature 144 professional players with a prize purse totaling \$1.3 million. There are numerous opportunities for you to volunteer. The list includes marshals, scorers, transportation, and housing of a player. For more information call: 734-619-6727 or 734-707-0789, talk with **Bill Hallock** or go to www.volviklpga.com.
- Early Bird Registration for 2016 Michigan District of Kiwanis Annual Golf Outing to support Kiwanis of Michigan Foundation and its children's hospital mission. Monday June 13, 2016 at Whispering Pines Golf Course, Pinckney, MI. Cost \$80 per golfer if registered by May 31, \$90 per golfer after. Cost includes golf, lunch, and BBQ dinner. Dinner only for \$25. Checks your payable to Kiwanis of Michigan Foundation. See **Larry French** for additional information.

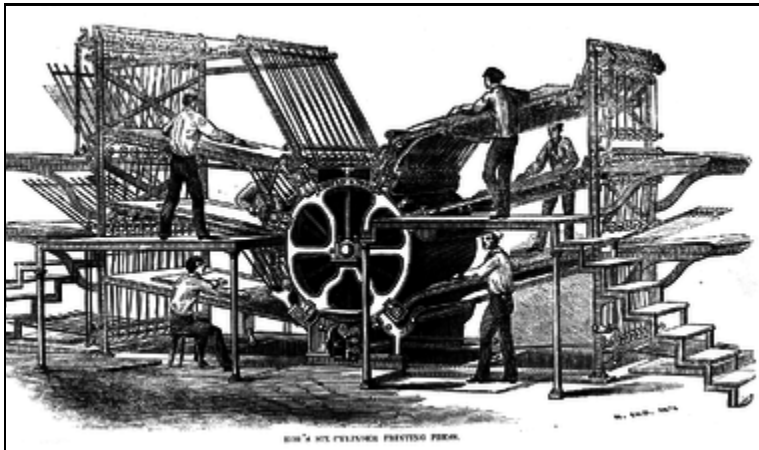
A Note to Our Readers:

Hard decisions are often required in the running of a mighty news enterprise. In that vein, we are today announcing Proof-reader Colon Ampersand has been dismissed from our staff after an alert reader noticed a missing leading quotation mark at the bottom of page five in last week's edition—or was it an unnecessary trailing quotation mark? Whatever; obviously a grievous lapse in proofreading. While the error may seem trivial to some, even small errors can lead to big problems—undercutting the high standards to which we aspire. As the proverb goes, "For want of a nail, the shoe was lost. Blah, blah, blah."

Of course, every storm cloud has its silver lining—in this case, an opening for an eager, go-getter in the Pressroom:

- Working conditions—trying
- Job security—tenuous
- Salary—nonexistent

Applicants versed in operating a rotary press should submit resume and references in triplicate. ~Pub.



Our State of the Art Rotary Press

Our Sponsored Programs in Service to Youth:



"Serving the Children of the World...our motto, our mission"

KIWANIS CLUB OF ANN ARBOR

Meetings:

Mondays at Noon
200 S. First Street
Ann Arbor, MI 48104
www.a2kiwanis.org

Building Phone:
734-665-2211



Sale and Donation Hours

Thrift Sale Downtown
200 S. First at Washington
Saturdays 9am-Noon

◆
Thrift Sale West
100 N. Staebler at Jackson
Fridays and Saturdays
9am-1pm

◆
Saleable Donation Drop Off:
Downtown: Mondays, Thurs-
days, and Saturdays
9-11:30am
West: Fridays and Saturdays
10am-12:30pm

◆
Call for Donation Pickup:
734-665-0450

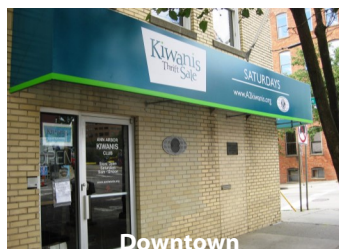


Other Links:

- [Michigan District Kiwanis](#)
Click [here](#) to read the latest *Michigan Builder*.
- [Kiwanis International](#)
- [U of M Circle K](#)
Meets 7pm Thursdays at UM Union or League (Check Calendar on Website)
- [Kiwanis Club of Ypsilanti](#)
Meets Noon Wednesdays at EMU Student Center
- Ann Arbor Western
Meets Noon Tuesdays at Quarter Bistro
- Kiwanis of Ann Arbor - Morning Edition
Meets 8:30am 2nd & 4th Wednesdays at Guy Hollerin's

"Serving the Children of the World"

Interested in becoming a member? Please send an e-mail to MembershipGrowth@a2kiwanis.org or visit the website www.a2kiwanis.org.



Downtown



West



Thanks to Our Advertising Supporters...

RE/MAX Platinum Realtors, Doug Ziesemer
734-769-8111

Betty Jean Harper, Visiting Vet
Your Home is My Office 734-475-9474

Raymond James & Associates,
Andrea Kotch Duda, CFP, 734-930-0555

Clarity Financial Advisors, Mark S. Wishka, ChFC, CFP, CLU, CRPC,
CASL, REBC, RHU—734-995-3996, markwishka.com

Charles Reinhart Realtors, Nathaniel Foerg, 734-834-1981
nfoerg@reinhartrealtors.com

Jim Carey, Charles Reinhart Realtors, 734-717-5591
jicarey@reinhartrealtors.com