

What's Inside:

Page 2

Assignments and Announcements

Page 3

Hospitality, Scholar Photos

Page 4

Club Calendar and Weekly Numbers

Page 5

More Scholar Photos

Page 6

More Scholar Photos

Page 7

Free Steelcase Furniture Offer

Page 8

Club Info and Thanks to Our Advertisers

Meetings...

None reported.

Next Week's Program...

May 9—Surgical Advancements in 3D Body Parts. Speaker: Dr. Glenn Green, U-M C.S. Mott Children's Hospital. Introduced by **Sheridan Springer**.

Upcoming Programs...

May 16—Club Officer/Board Member Election (2016-17) at the Kiwanis Center Downtown.

May 23—New! An Everything UM Website. Speaker: Jim Kosteva, Director, U-M Community Relations. Introduced by: **Dale Leslie**



Kiwanis®

Kiwanis Club of Ann Arbor

Ann Arbor News 2015 Deal of the Year Retail Award Winner

Volume 7, Issue 31

May 2, 2016

Today's Program...

Presentation of the Kiwanis Club of Ann Arbor Scholarships:



Claire Dahl



David Comsa



Peter Schork

Claire Dahl welcomed the students, teachers, parents and grandparents who were in attendance. She then introduced Mr. David Comsa, Deputy Superintendent, Human Resources/General Counsel of Ann Arbor Public Schools who made remarks recognizing the importance of the day and the accomplishments of the scholarship recipients. Claire then presided over presentation of this year's nine Kiwanis Memorial Scholarships.

Peter Schork emceed the remaining 41 awards. A collaboration between the Ray & Eleanor Cross Foundation and Kiwanis Club of Ann Arbor Members provided 35 scholarships; the Smith/Gray Scholarships were awarded to two students; and The Ray & Eleanor Cross Foundation Memorial Scholarships were awarded to the four remaining recipients. Individual scholarship recipient photos are on pages 3, 5, and 6.

The Scholarship Recipients



Seated (L>R): Savannah M. Ellington, Pamela Quintana-Salazar, Brianna Lynn Campbell, Maya Foster, Ella Horwedel, Fariha Farjana, Madison Squires; Second row standing (L>R): Anik Clement, Kendra Shannon, Taylor Elam, Frances MacKercher, Sarah Michelson, Meredith Egeler, Emma Mushaka, Juhi Patel, Gloria Grace VanRenterghem, Charity Grace Foster, Kaelan Oldani; Standing behind second row (L>R): Sydney Elizabeth Moore-Padgett, Janay Ramirez, Aaron Frazier, Bernadette Fitzsimmons, Avery J. Farmer, Wouter Ritsema, Russell Gage Sansbury, Kenneth Simpson, Richard Charles Bremer III, Christian Morris, Nathan C. Weinert, Alexander Johnson, Maimouna Mbacke, Adela Baker, Margaret Mooney and Joi Janelle White. Not pictured: Nathan Helberg, Jane-Marie Anderson, Basil Baccouche, John Randolph Crawford, Myles McGuire, and Andrew W. Heise.



Kiwanis Club of Ann Arbor
CHARTERED IN 1921

Officers and Directors

President:

Betsy Ford

President-Elect:

Alan Burg

Treasurer:

Eloise Lavin

Secretary:

Kathie Wilder

Immediate Past-

President:

John Goff

Board Members:

Ray Argyle
Kathy Barden-Perlberg
Claire Dahl
George Gilligan
William Hampton
Joseph Medrano
William Robb
Kenneth Shaw
Richard Smit
Ellen Webb



Newsletter:

Editor

Dave LaMoreaux

Photos

Bob Gray

Publisher

John Kidle



Do you have news for the newsletter, or are you interested in advertising? Contact Publisher, John Kidle, at jkidle@gmail.com.

ASSIGNMENTS for the COMING WEEK:

Officer of Day KCD	Ron Gardner
Antiques	Pat Buhner and Sally Lamkin
Beds & Garden	Dave Bell and Steve Hiller
Dockers	We need dockers
Sorters	We need sorters
Housewares	Jerry Brown, Dan Dever and Marianne Clauw
Men's Clothing	John Bassett and Dick Smit
Books/Records	John Schenk
Office & Medical	Jim Mattson and the Cotton Balls
Lamps	Dennis Powers and his Boll Weevils
Electronics	Bill Robb and the Cotton Swabs
KCW	Friday —Ray Argyle, Marianne D'Angelo, Nick Dever (OD), Dave Drake, Garry Evans, Bob Gray, Eloise Lavin, Glenda and Ralph Maten, Fred Sanchez, Sheridan Springer, Carla Summers, Ellen Webb and Marcia Wells Saturday —Kelly Bertoni, Jim Blomquist, Alan Berg, Marianne D'Angelo, Nick Dever, Gary Fulton, Bob Gray, Margaret Krasnoff, Evan LeRoy, Gerry Luke, Craig and Tracie Meisner, Amy Price, Mark Reed and Doug Ziesemer (OD)
Vouchers	Ellen Webb, Sally Lamkin, Dave LaMoreaux, Sue Dailey, Jean Robinson, Dot Cattell, and Matt Chaiken
Invocation	Max Ziegler
Greeters/Attend.	D. McNab-Cattel (A), J. Kidle, J. Sampsel, B. Tasch, and J. Wight
Hospitality	Jane Talcott
Cashier	Martha Petroski

Guests at Our Club...

37 Students Scholarship recipients, their sponsors, members of the Cross family, the General Counsel and Deputy Superintendent of the Deputy Ann Arbor Public Schools, David Comsa. **Jim Wight** introduced Ted Wilson and Dick Hitch, guests of **Sherry Springer**; Larry Dittmar, Honorary Member; and Nicole Zollinger and Art Vuolo Jr. guests of **Gordon Beeman**. Odie Elden was introduced by **President Betsy Ford**.

Announcements...

- Thanks to the Scholarship Committee: **Bob Carr, Harry Cross, Peter Schork, Claire Dahl, Martha Petroski, Don Kossick, Bill Tasch, Bill Hallock, and Dan Burroughs** for their hard work in creating today's program.
- The A2Y Chamber Semi-Annual Grub Crawl**—The Ann Arbor/Ypsilanti Regional Chamber will be hosting their Semi-Annual Grub Crawl on Wednesday, May 11th, 2016 from 5:00-9:00 pm in the South Ann Arbor Retail Districts (Briarwood Mall area, Ann Arbor Saline Rd., Eisenhower Pkwy., & State Street). Guests will arrive between 5:00-5:30 pm at their first assigned location to receive a ticket. You will take your ticket around to each of the restaurants to serve as your admittance to the event. Guests can attend each of the restaurants once anytime between 5 & 9pm on May 11th to sample one or more of their specialties. All Kiwanis Club of Ann Arbor members are also Chamber members and eligible to attend. Tickets: \$20 Adults/\$5 Kids 12 and under. Click [here](#) for registration info.
- CORRECTION**—Veteran Kiwanian Richard Brunvand's name was incorrectly shown as "Dick Broadband" in last week's Hospitality section. Lacking any evidence to support our spelling as correct, the editorial team concedes the error and extends apologies to Mr. Brunvand. However, we continue to believe that Broadband would be an apt name in the Internet Age and recommend that Dick consider adopting the moniker.

Stuff You Should Know...

Hospitality News:

Jane Talcott reported receiving no hospitality news.



Lee Bachman

Dale Leslie passed along the news that **Lee Bachman** passed away on the morning of May 2nd after a long illness. He joined the club in 1984 and served as president during our 75th anniversary year, 1995-96. Lee and his wife, Mary, live in the house that Lee built after purchasing the plans and the wood via mail order. He worked solo on the home in the evenings and on the weekends. It is a roomy, beautiful home in Ypsilanti. Other information about Lee:

- He labeled facing a decision about a difficult issue, a "conundrum";
- Lee served and was honorably discharged from the U.S. Navy;
- He was the department chair in Industrial Education at Ann Arbor Pioneer High School;
- His calling was education and he took a sincere interest in his students; and
- Lee's collection of unique antique banks is one the largest of its kind.

Arrangements are incomplete. Log on to: <http://obits.mlive.com/obituaries/annarbor/> for updates.

Dale also reported that Fulton Eaglin was in town on May 1st visiting his father, Simon Eaglin. Fulton is enjoying life in California but misses his Kiwanis friends. Drop Fulton and Jan a note or an email at: Fulton and Jan Collins-Eaglin, 2270 Tulsa Avenue, Claremont, CA 91711 or fbeaglin@aol.com.

Photos from Today's Program...

Kiwanis Club of Ann Arbor Memorial Scholarships:



Charles W. Carpenter Memorial Scholarship recipient Pamela Quintana-Salazar, Community HS.



Charles W. Carpenter Memorial Scholarship recipient Kendra Shannon, Huron HS.



Charles W. Carpenter Memorial Scholarship recipient Basil Bacouche, Pioneer HS.



Charles W. Carpenter Memorial Scholarship recipient Taylor Elam, Skyline HS.



Alan M. Dailey Memorial Scholarship recipient Juhi Patel, Huron HS.



Donald L. Naylor Memorial Scholarship recipient Joi Janelle White, Pathways to Success Academic Campus.

Not pictured: Nathan Helberg, Jane-Marie Anderson, and John Randolph Crawford.

Kiwanis
Thrift Sale

Known worldwide as the place for the "funkiest" gift.

Check for Special Items on

craigslist

and



Every Week!

Since 2004
Over \$2,482,000
in Proceeds from
the Kiwanis
Thrift Sale have
been used to
Benefit Our
Community.



Lunch Time

Lunch is served
beginning at 11:30am
Come early... get a
parking spot and extra
time to enjoy the good
food before the
meeting starts at
12:10pm

May 2016

Sun	Mon	Tue	Wed	Thu	Fri	Sat
1	2 Scholarships/ Camperships KCD Donations 9am-Noon	3 Board Meeting 7pm	4	5 KCD Donations 9-12	6 Sale & Dona- tions: KCW 9-1	7 Sale & Dona- tions: KCD 9-12 KCW 9-1
8	9 Surgical Ad- vancements KCD Donations 9am-Noon	10	11	12 KCD Dona- tions 9-12	13 Sale & Dona- tions: KCW 9-1	14 Sale & Dona- tions: KCD 9-12 KCW 9-1
15	16 Club Election KCD Donations 9am-Noon	17	18	19 KCD Dona- tions 9-12	20 Sale & Dona- tions: KCW 9-1	21 Sale & Dona- tions: KCD 9-12 KCW 9-1
22	23 UM Website KCD Donations 9am-Noon	24	25	26 KCD Dona- tions 9-12	27 Sale & Dona- tions: KCW 9-1	28 Sale & Dona- tions: KCD 9-12 KCW 9-1
29	30 Meeting on Tuesday. KCD Donations Closed Memorial Day	31 Local Strate- gies Addressing Terrorism				



This Week's Numbers

Attendance:

68

Fines:

\$0

Happy \$:

\$0

Mott Pot:

\$0

Vouchers:

\$1,125
(7 Families)
\$32,915 YTD

Thrift Sale:

KCD:
\$5,257

KCW:
\$4,749

Other:
\$0

TOTAL:
\$10,006

•••The fact that you are taking time to read this indicates a high aptitude for being a newsletter editor. Email John Kiddle at jkiddle@gmail.com immediately to volunteer •••

June 2016

Sun	Mon	Tue	Wed	Thu	Fri	Sat
			1	2 KCD Donations 9-12	3 Sale & Dona- tions: KCW 9-1	4 Sale & Dona- tions: KCD 9-12 KCW 9-1
5	6 TBD KCD Donations 9am-Noon	7 Board Meeting 7pm	8	9 KCD Donations 9-12	10 Sale & Dona- tions: KCW 9-1	11 Sale & Dona- tions: KCD 9-12 KCW 9-1
12	13 Sue Petrisin KCD Donations 9am-Noon	14 Flag Day	15	16 KCD Dona- tions 9-12	17 Sale & Dona- tions: KCW 9-1	18 Sale & Dona- tions: KCD 9-12 KCW 9-1
19 Father's Day	20 TBD KCD Donations 9am-Noon	21	22	23 KCD Dona- tions 9-12	24 Sale & Dona- tions: KCW 9-1	25 Sale & Dona- tions: KCD 9-12 KCW 9-1
26	27 TBD KCD Donations 9am-Noon	28	29	30 KCD Dona- tions 9-12		



Photos from Today's Program...

Kiwanis Club of Ann Arbor and Ray & Eleanor Cross Foundation Collaborative Scholarships:



Letitia Byrd Scholarship recipient Maya Foster, Huron HS, presented by John Goff.



Kiwanis Business Group Scholarship to pursue a career in business recipient Alexander Johnson, Skyline HS, presented by Gordon Beeman.



John & Claire Dahl Scholarship recipient Sarah Michelson, Pioneer HS, presented by John and Claire Dahl.



Johannah Lemble Memorial Scholarship recipient Brianna Lynn Campbell, Pathways to Success Academic Campus, presented by Greg Meisner.



Mary Sexton & Robyn Menin Memorial Scholarship to pursue a career in family planning and/or population issues recipient Frances MacKercher, Community HS. Presentation by Mary Sexton.



William R. Lynn Memorial Scholarship recipient Myles McGuire, Skyline HS, presented by Judy Lynn.



Rip & Judy Kinney Scholarship to pursue a career in education recipient Margaret Mooney, Pioneer HS, presented by Don Kossick.



Dean Al Gallup Scholarship to Avery J. Farmer, Community HS, presented by Al Gallup.



Eugene A. Glysson Memorial Scholarship to pursue a career in engineering at the University of Michigan to Gloria Grace VanRenterghem, Huron HS, presented by Jim Wight.



Robert James Borden, Sr. Scholarship to Christian Morris, Skyline HS, presented by Bob Barden, Jr. and Kathy Barden-Perlberg



C. Merle Crawford Memorial Scholarship recipient Wouter Ritsema, Pioneer HS, presented by Ann Mattson.



Donald D. Kenney Memorial Scholarship recipient Meredith Egeler, Huron HS, presented by Joan Masters.



Marilyn Malone Memorial Scholarship recipient Madison Squires, Pathways to Success Academic Campus, presented by Kathy Griswold.



Judge S. J. "Sandy" Elden Memorial Scholarship recipient Charity Grace Foster, Pioneer HS presented by Odle Elden.



William Hampton Scholarship to Kenneth Simpson, Community HS, presented by Garry Donner.



Don Clewell Scholarship recipient Janay Ramirez, Skyline HS, presented by Fred Miller.



Clarence Dukes + Bill & Phyllis Robb Scholarship recipient Adela Baker of Huron HS, presented by Bill Robb.



Earl W. Shaffer Memorial Scholarship to pursue a career in business education recipient Nathan C. Weinert, Skyline HS, presented by Marie Shaffer.

Our Sponsored Programs in Service to Youth:



"Serving the Children of the World...our motto, our mission"

Photos from Today's Program...

Kiwanis Club of Ann Arbor and Ray & Eleanor Cross Foundation Collaborative Scholarships (Cont.):



Cliff & Ingrid Sheldon Scholarship recipient Maimouna Mbacke, Huron HS, presented by Cliff Sheldon.



Kiwanis Business Group Scholarship to pursue a career in business recipient Russell Gage Sansbury, Pioneer HS, presented by Max Ziegler.



Pfizer Corporation Scholarship recipient Kaelan Oldani, Skyline HS, presented by Bob Johnson.



Bill & Karen Tasch + Dan & Adrienne Burroughs Scholarship recipient Savannah M. Ellington, Pioneer HS, presented by Dan Burroughs and Bill Tasch.



David Drake & Larry French Scholarship recipient Sydney Elizabeth Moore-Padgett, Skyline HS.



Roberta Ellison Robinson & Mozelle Robinson Meacham Memorial Scholarship recipient Aaron Frazier, Pathways to Success Academic Campus, presented by Jean Robinson.

Not pictured: Myles McGuire and Andrew W. Heise.

The Smith/Gray Scholarships:



Susan M. Smith & Robert H. Gray Scholarship recipient Farina Farjana, Huron HS, presented by Susan Smith and Bob Gray.



Susan M. Smith & Robert H. Gray Scholarship recipient Ella Horwedel, Skyline HS, presented by Susan Smith and Bob Gray.

The Ray & Eleanor Cross Foundation Memorial Scholarships:



Ray E. Cross Memorial Scholarship to pursue a career in engineering at Michigan Technological University recipient Richard Charles Bremer III, Pioneer HS. Presented by Bradley Cross.



Eleanor K. Cross Memorial Scholarship to pursue a career in family planning and/or population issues recipient Bernadette Fitzsimons, Pioneer HS, presented by Carmen Cross (holding grandson Daniel Cross).



Gordon R. Doolittle Memorial Scholarship to pursue a career in health care recipient Anik Clement, Huron HS.



Eleanor M. Doolittle Memorial Scholarship to pursue a career in health care recipient Emma Mushaka, Skyline HS, presented by Fernanda Cross (holding Anna Cross).

Congratulations to the Scholars!

Steelcase Modular Workstations Available to Churches, Schools or Other Non-Profits (FREE)

We have approximately 50 workstations that we want clear out of existing office space. Below are a limited number of examples of work stations and some of their components (panels of various sizes, desk tops of various sizes and shapes, bins and shelves that hang on walls of the panels and file drawers (beneath desks). We are making these components **available to churches, schools or other non-profits** that may have use for them. Items are available now for disposition. Interested parties must disassemble and remove them from our property by the end of May, or sooner if possible. If interested, please contact Bob Gray (734-604-4977) to make arrangements to see them and/or transporting them from our facilities at KCW.



KIWANIS CLUB OF ANN ARBOR

Meetings:

Mondays at Noon
200 S. First Street
Ann Arbor, MI 48104
www.a2kiwanis.org

Building Phone:
734-665-2211



Sale and Donation Hours

Thrift Sale Downtown
200 S. First at Washington
Saturdays 9am-Noon



Thrift Sale West
100 N. Staebler at Jackson
Fridays and Saturdays
9am-1pm



Saleable Donation Drop Off:
Downtown: Mondays, Thurs-
days, and Saturdays
9-11:30am

West: Fridays and Saturdays
10am-12:30pm



Call for Donation Pickup:
734-665-0450

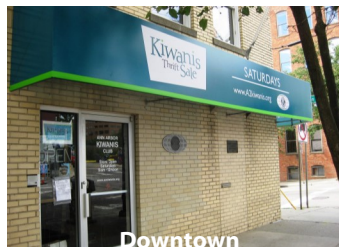


Other Links:

- [Michigan District Kiwanis](#)
Click [here](#) to read the latest *Michigan Builder*.
- [Kiwaniis International](#)
- [U of M Circle K](#)
Meets 7pm Thursdays at UM Union or League (Check Calendar on Website)
- [Kiwaniis Club of Ypsilanti](#)
Meets Noon Wednesdays at EMU Student Center
- Ann Arbor Western
Meets Noon Tuesdays at Quarter Bistro
- Kiwanis of Ann Arbor - Morning Edition
Meets 8:30am 2nd & 4th Wednesdays at Guy Hollerin's

"Serving the Children of the World"

Interested in becoming a member? Please send an e-mail to MembershipGrowth@a2kiwanis.org or visit the website www.a2kiwanis.org.



Downtown



West



Thanks to Our Advertising Supporters...

RE/MAX Platinum Realtors, Doug Ziesemer
734-769-8111

Betty Jean Harper, Visiting Vet
Your Home is My Office 734-475-9474

Raymond James & Associates,
Andrea Kotch Duda, CFP, 734-930-0555

Clarity Financial Advisors, Mark S. Wishka, ChFC, CFP, CLU, CRPC,
CASL, REBC, RHU—734-995-3996, markwishka.com

Charles Reinhart Realtors, Nathaniel Foerg, 734-834-1981
nfoerg@reinhartrealtors.com

Jim Carey, Charles Reinhart Realtors, 734-717-5591
jicarey@reinhartrealtors.com