

What's Inside:

Page 2

Assignments, Guests, Hospitality, Fines, Happy Dollars, Interclubs, Social Events

Page 3

Today's Program Continued from Page 1

Page 4

Club Calendar and Weekly Numbers

Page 5

Today's Program Continued from Page 3

Page 6

Golf Outing Pics

Page 7

Club Info and Thanks to Our Advertisers

Committee Meetings...

Community Services Committee met after Today's meeting in Ned's Place.



Kiwanis®

Kiwanis Club of Ann Arbor

Ann Arbor News 2015 Deal of the Year Retail Award Winner

Volume 7, Issue 50

September 12, 2016

Today's Program...

Proposed KCD Sale Information

The program today consisted of a final set of presentations by a variety of Kiwanis members regarding the possible sale of the Kiwanis Center Downtown (KCD) building. The Newsletter editor has attempted to capture the spirit and details of these presentations, but apologizes in advance for any inaccuracies.

President Betsy Ford initiated the discussion by giving her opinion on the sale of KCD. Because she is a visual learner, she used some posters as part of her presentation. She emphasized that a primary mission of our Kiwanis club is to help support children and their families. Funds raised through our thrift sales at KCD and Kiwanis Center West (KCW) enable us to achieve this mission. In earlier years we were able to give approximately \$150,000 in donations to various organizations. This year that total is close to \$30,000 and future giving is in doubt. Of course we also give service and funds through the Cross Foundation, our Voucher program, the Eliminate Fund (Kiwanis International), and many other ways.

President Betsy then focused on our properties, KCD, KCW (sales and lease space), and the Out-lot adjacent to KCW. She discussed their income efficiency, asset value and marketability. For income efficiency KCD is essentially maxed out; KCW is operating well and has great future potential; the Out-lot does not apply. For asset value she listed KCD at \$2.5M, KCW at \$2.5M, and the Out-lot at \$0.7M. For marketability KCD is in a hot and rapidly moving market; KCW has good sales/lease potential, but the market is slower; and the Out-lot has good potential in a moderately moving market.

In summary, President Betsy said we need to decide how we can reduce our overhead and increase our potential income for giving to the Ann Arbor community. The sale of KCD is a way to achieve this goal.

Alan Burg then explained that each speaker today would have 3 minutes for their presentation.

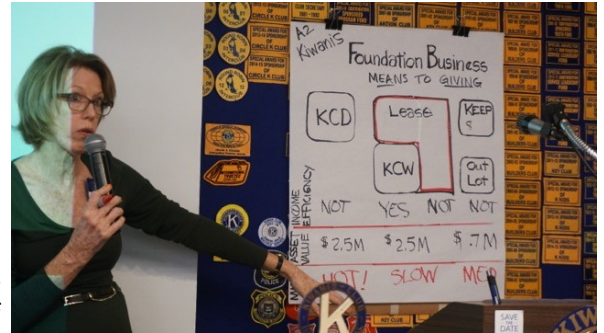
—Continued on Page 3—

Next Week's Program...

September 19—Club Business, Membership Vote on Proposed KCD Sale. Official voting is scheduled to take place on Monday, September 19, 2016 during the regularly scheduled weekly meeting of the membership, located at Kiwanis Center Downtown, 200 S. First St., Ann Arbor, MI. Official voting will start at 12:30pm and end at 12:45pm.

Upcoming Programs...

- **September 26**—Officer and Director Installation.
- **October 3**—Hixson Award Presentations. **Harry Cross**, M.C.
- **October 10**—Hire a Vet Program. Speaker: Don Deatrick. Introduction: TBD.



President Betsy Ford



Kiwanis Club of Ann Arbor
CHARTERED IN 1921

Officers and Directors

President:

Betsy Ford

President-Elect:

Alan Burg

Treasurer:

Eloise Lavin

Secretary:

Kathie Wilder

Immediate Past-

President:

John Goff

Board Members:

Ray Argyle
Kathy Barden-Perlberg
Claire Dahl
George Gilligan
William Hampton
Joseph Medrano
William Robb
Kenneth Shaw
Richard Smit
Ellen Webb



Newsletter:

Editor

Jim Wight

Photos

Bob Gray

Publisher

John Kidle



Do you have news for the newsletter, or are you interested in advertising? Contact Publisher, John Kidle, at jkidle@gmail.com.

ASSIGNMENTS for the COMING WEEK:

Officer of Day KCD	Sally Lamkin
Antiques	Alexis Ford
Beds & Garden	Kathy Stroud and Mike Anglin
Dockers	We need dockers
Sorters	Max Ziegler
Housewares	Andrea Kotch Duda, David Hughes, and Bill Milne
Men's Clothing	John Bassett and Dan Dever
Books/Records	Jim Reynolds
Office & Medical	Jim Mattson and the Arch Army
Lamps	Dennis Powers and the Bud-wiesers
Electronics	Bill Robb and River Man
KCW Cashiers & Sales	Friday —Ray Argyle, Gordon Beeman (OD), Bob Gray, Dave LaMoreaux, Eloise Lavin, Bud Roberts, John Sampsele, Sheridan Springer, and Ellen Webb Saturday —Jim Blomquist, Jerry Brown, Alan Burg, Al Engerer, Bob Gray (OD), Ken Hillenburg, Margaret Krasnoff, Bud Roberts
KCW Sorting & Pricing	Wednesday —Carol Bagchi, Bob Gray, Mike Harback Thursday —Page Caufield, Patti DeYoe, Jack Ford, Bob Gray Friday —Carol Bagchi, Janet Bloom, Marianne D'Angelo, Gary Kavanagh, Sharon Keyes, Margaret MacDonald, Glenda & Ralph Maten, Sandra Rabi-doux Saturday —Pamela Brown, Linda Harris
Vouchers	Ellen Webb, Dale Leslie, Max Ziegler, Matt Chaiken, Don Clewell, Sally Lamkin, and Susan Smith
Invocation	Jane Talcott
Greeters/Attend.	Tom Dew, Bill Heller, Clarence Dukes, Jane Talcott (A)
Hospitality	Don Kossick
Newsletter Editor	Dale Leslie
Cashier	Martha Petroski

Guests at Our Club...

Tom Dew introduced today's guests: Jack Navadoff, Western Kiwanis Club; Charlie Phibbs, Western Kiwanis Club and Lt. Governor; Arno Buhrer, guest of **Pat Buhrer**; Christian Wire, UM Circle K. Welcome all!

Hospitality News...

Don Kossick reported with input from **Martha Petroski**. **Luz Snider** is caring for her husband, **Bob Snider**, who has lost his sight. She is also caring for Bob's son, who had a stroke and cannot speak. Luz is very busy and needs our prayers.

Fines...

None today.

Happy Dollars...

\$130 from **Max Ziegler** in celebration of his 78th Birthday and his 52nd Wedding Anniversary.

Interclubs...

Interclub report by **Dave Drake**—A group of golfers joined with the Kiwanis group in Hillsdale for golf and an Interclub. The Kiwanis Morning Edition will hold a Super Interclub on Wednesday, September 21, at 8:30am at Glacier Hills Retirement Center

Social Activities...



See photos of our annual golf outing on page 6.

Today's Program Continued from Page 1... Three-Minute Speakers:

Max Ziegler started by stating some exceptions to what has been previously presented. Our inventory of goods needs to be easily accessible, we need individual sales departments, and we must be responsive to pick-up requests (which we are currently not doing). KCD is a historical part of Ann Arbor and all of the customers that Max has interacted with say, "don't sell" the downtown store. He says KCW is not part of Ann Arbor. Max says sell KCW and keep KCD.



Garry Donner wanted to represent both himself and the committee he chairs, Human and Spiritual Values. He polled his committee and two-thirds of the members favor keeping KCD. His personal opinion is that we should try to keep both stores and assume we can increase our giving to the community over the next few years. Garry is concerned that KCW does not have a long and proven track record, and he does not think a majority of KCD customers will migrate to KCW. He considers KCD to be a "cash cow" and we should not sell a cash cow. He believes the decision to sell KCD should be delayed.



Kathy Barden-Perlberg remembers as a child telling customers "Kiwaniis will do good things with your money and your donations." She has held many important positions in Kiwanis, including being a legacy member of the Planning Committee. She knows the history of Kiwanis and feels she is part of that history. She is worried that we will lose much of that history and the walk-in shoppers at KCD may not find their way to KCW. However, Kiwanis is not just history. All of us are Kiwanis and we are facing some real financial issues now. She urges us to vote "yes" to sell KCD.



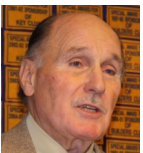
Christian Wire spoke on behalf of the leadership of UM Circle K. Members of Circle K want to maintain a positive relationship with the Kiwanis Club of AA and will support whatever decision is ultimately made. Currently, KCD is within easy access from the UM Campus. If meetings and sales operations are moved to KCW, Circle K students will need help with rides to continue their close interaction with us. They expressed some concern that regular UM students will be less likely to shop at KCW than at KCD.



Bob Gray wanted to expand on the Q and A message that was sent to Kiwanis members by email before this meeting. He said that KCD is highly dependent on the storage available at KCW. During the last 15 months, 125 pallets of sale items have been shipped from KCW to KCD. With respect to the time required to sell the large inventory of goods at KCW, he indicated that most items move out fairly quickly. He did say we have an excess of office equipment and furniture that will take more time to move.



Marianne Clauw urged a "no" vote. She thinks we are operating with inadequate information for making this decision. We have not adequately included opinions and comments from our customer base and the local community. We need to find a sensible way to solve our short-term financial needs while maintaining our long-term need to stay connected to the Ann Arbor community.



Clarence Dukes spoke as a Past President, former Governor, and longtime worker in KCD. He joined Kiwanis in 1965 when the sale was still held at the Armory. Long before the Planning Committee started seeking extra space to store goods for sales at KCD, he realized the need for additional storage and sales space. He believes it is the right decision to sell KCD to be able to support our primary mission of giving back to the community.



Harry Cross said he thought this was a very momentous decision and it is being handled in a rushed manner. He said there has not been enough time to discuss fully all the aspects of this decision. He favors voting "no" to delay making the decision at this time. The motion can be brought forward again at a future time. He said that if selling the Out-lot is the key to keeping both buildings, maybe a group of Kiwanis members could purchase the Out-lot and then continue looking for an outside buyer.

—Continued on Page 5—

Kiwanis
Thrift Sale

Known worldwide as
the place for the
"funkiest" gift.

Check for Special Items
on

craigslist

and



Every Week!

Since 2004
Over \$2,482,000
in Proceeds from
the Kiwanis
Thrift Sale have
been used to
Benefit Our
Community.



Lunch Time

Lunch is served
beginning at 11:30am
Come early... get a
parking spot and extra
time to enjoy the good
food before the
meeting starts at
12:10pm

September 2016

Sun	Mon	Tue	Wed	Thu	Fri	Sat
				1 KCD Donations 9-12	2 Sale & Donations: KCW 9-1	3 Sale & Donations: KCD 9-12 KCW 9-1
4	5 (Mtg. on Tues.) KCD Donations 9am-Noon Labor Day	6 Club Business	7	8 KCD Donations 9-12 Golf Outing Pierce Lake 7am	9 Sale & Donations: KCW 9-1	10 Sale & Donations: KCD 9-12 KCW 9-1
11	12 Club Business KCD Donations 9am-Noon	13 Board Meeting 7pm	14	15 KCD Donations 9-12	16 Sale & Donations: KCW 9-1	17 Sale & Donations: KCD 9-12 KCW 9-1
18	19 Club Business- Vote KCD Donations 9am-Noon	20	21	22 KCD Donations 9-12	23 Sale & Donations: KCW 9-1	24 Sale & Donations: KCD 9-12 KCW 9-1
25	26 2016-17 Installations KCD Donations 9am-Noon	27	28	29 KCD Donations 9-12	30 Sale & Donations: KCW 9-1	

October 2016

Sun	Mon	Tue	Wed	Thu	Fri	Sat
						1 Sale & Donations: KCD 9-12 KCW 9-1
2	3 Hixson Awards KCD Donations 9am-Noon	4	5	6 KCD Donations 9-12	7 Sale & Donations: KCW 9-1	8 Sale & Donations: KCD 9-12 KCW 9-1
9	10 Hire a Vet KCD Donations 9am-Noon Columbus Day	11	12	13 KCD Donations 9-12	14 Sale & Donations: KCW 9-1	15 Sale & Donations: KCD 9-12 KCW 9-1
16	17 Joe Schwartz KCD Donations 9am-Noon	18 Board Meeting 7pm	19	20 KCD Donations 9-12	21 Sale & Donations: KCW 9-1	22 Sale & Donations: KCD 9-12 KCW 9-1
23	24 Board News KCD Donations 9am-Noon	25	26	27 KCD Donations 9-12	28 Sale & Donations: KCW 9-1	29 Sale & Donations: KCD 9-12 KCW 9-1
30	31 Hon. Members KCD Donations 9am-Noon Halloween					



This Week's Numbers

Attendance:

70

Fines:

\$0

Happy \$:

\$130

Mott Pot:

\$0

Vouchers:

\$1,415

(8 Families)

\$56,765 YTD

Thrift Sale:

KCD:

\$4,824

KCW:

\$5,498

Other:

\$119

TOTAL:

\$10,441

✂ Email John Kiddle at jkiddle@gmail.com immediately to volunteer ✂



Today's Program Continued from Page 3...



Cathy Boise, a volunteer in KCD, said that she would not be able to volunteer or shop at KCW. Like several Ann Arbor citizens, she does not own a car and depends on walking and public transportation to get around town. There are no current or planned bus routes out to KCW. She says many poor people shop at KCD because they do not have an alternative for good quality merchandise at a low price. She believes KCD is a very good thing for the Ann Arbor community.



John Dahl summarized a statement from **Mike Dabbs**. As a Past President and former Committee Chair, Mike is urging us to vote "yes" to sell KCD. He believes the sale is not dependent on location and that customers will find us. The sale is driven by members and volunteers, not location. Our current location is limiting our ability to distribute significant funds to the Ann Arbor community. We must prepare for the future, as prior generations of Kiwanians have done.



Alan Burg read a statement from **Larry French**. Larry is concerned that we have lost our ability to give adequate financial gifts to organizations within the Ann Arbor community. We can offer direct support and will continue to do so, but we need to give financial gifts to make a stronger impact. We need to vote "yes" to be able to get back to making financial gifts.



Peter Schork has worked within Kiwanis since 1974 and inventory space has always been an issue. As a club, we have made many significant decisions over his time as a Kiwanian, and this is just another one. He believes that SMOC and the Planning Committee have worked for years on this type of a decision. This is not a quick decision. The goal of purchasing KCW was to increase our giving to the community and he is embarrassed by our current low giving rate. Please vote "yes".



Rob Schultz is a relatively new and proud member of Kiwanis. He is also unhappy with the current very low funding level for community organizations. However, he is concerned about making this decision on the advice of the same group that made the prior decision to purchase KCW. He also points out that the composition of our shoppers is significantly different from the composition of Kiwanis members. He does not expect AATA to extend a route out to service KCW and he urges a "no" vote to delay a final decision at this time.



Ken Hillenburg expressed his respect for the diversity of opinions within our group. He says we must move forward together and resolve to find common ground. He believes the financial and social considerations have been adequately covered, but he is concerned that we stay together as a hard-working club that rejoices in the joy of giving. He believes that KCD is a strong financial asset that is not currently giving us an adequate return. He urges us to vote "yes" for the sale of KCD.



Ken Shaw has served on the Sales Policy Committee, SMOC, and now is a member of the Board. He believes that both KCD and KCW are successful and keeping both locations is very important for future sales. He is aware of our poor financial state, but he would like to keep KCD and see if the Out-lot can be sold to relieve the current conditions. If that sale is not successful, we can again vote on the sale of KCD. He urges a "no" vote to delay the decision for now.

Alan Burg wrapped up the discussion with his own comments. He said we have enough information to make a decision now. We are one crisis from a financial crash. Also, a downturn in the economy could affect the sales market for KCD. The operation at KCD is highly dependent on having storage space at KCW. By selling KCD, we can take charge of our finances and quickly get back to providing financial support to community groups. He believes this discussion and open sharing of information has been good for the club, but he urges us now to vote "yes".

Alan also discussed voting instructions and a sample ballot that was available at today's meeting. The same information will be sent to the full membership this week. However, note that these are sample ballots. The actual ballots will be distributed at next week's meeting.

The meeting was adjourned by **President Betsy**, following the Pledge of Allegiance.

2016 Club Golf Outing at Pierce Lake Golf Course...



Our Sponsored Programs
in Service to Youth:



"Serving the Children of the World...our motto, our mission"

KIWANIS CLUB OF ANN ARBOR

Meetings:

Mondays at Noon
200 S. First Street
Ann Arbor, MI 48104
www.a2kiwanis.org

Building Phone:
734-665-2211



Sale and Donation Hours

Thrift Sale Downtown

200 S. First at Washington
Saturdays 9am-Noon



Thrift Sale West

100 N. Staebler at Jackson
Fridays and Saturdays
9am-1pm



Saleable Donation Drop Off:

Downtown: Mondays, Thurs-
days, and Saturdays
9-11:30am

West: Fridays and Saturdays
10am-12:30pm



Call for Donation Pickup:
734-665-0450

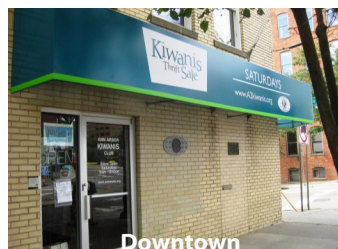


Other Links:

- [Michigan District Kiwanis](#)
Click [here](#) to read the latest *Michigan Builder*.
- [Kiwanis International](#)
- [Kiwanis Young Professionals of Washtenaw County](#) Meets 6pm first Thurs. of Month
- [U of M Circle K](#)
Meets 7pm Thursdays at UM Union or League (Check Calendar on Website)
- [Kiwanis Club of Ypsilanti](#)
Meets Noon Wednesdays at EMU Student Center
- Ann Arbor Western, Meets Noon Tues. at Quarter Bistro
- [Kiwanis Ann Arbor Morning Edition](#), Meets 8:30am 2nd & 4th Weds. at Guy Hollerin's

"Serving the Children of the World"

Interested in becoming a member? Please send an e-mail to MembershipGrowth@a2kiwanis.org or visit the website www.a2kiwanis.org.



Downtown



West



Thanks to Our Advertising Supporters...



RE/MAX Platinum Realtors, Doug Ziesemer
734-769-8111, dfziesemer@aol.com

Betty Jean Harper, Visiting Vet
Veterinary Visits in YOUR Home 734-475-9474

Raymond James & Associates, Andrea Kotch Duda, CFP
www.RaymondJames.com/andreakotchduda, 734-930-0555

Clarity Financial Advisors, Mark S. Wishka, ChFC, CFP, CLU, CRPC,
CASL, REBC, RHU—734-995-3996, markwishka.com

Charles Reinhart Realtors, Nathaniel Foerg, 734-834-1981
nfoerg@reinhartrealtors.com

Jim Carey Realtor®, Charles Reinhart Realtors
734-717-5591, jcarey@provide.net