

## What's Inside:

### Page 2

*Assignments, Guests, Hospitality, Announcements*

### Page 3

*Fines, Happy Dollars, Social Events, Interclubs, 3-Minute Speech*

### Page 4

*Club Calendar and Weekly Numbers*

### Page 5

*Today's Meeting Photos, A Correction*

### Page 6

*Club Info and Thanks to Our Advertisers*

## Upcoming Programs...

- **October 10**—*Hire a Vet Program*. Speaker: Don Deatrack. Introduction: **Jim Wight**.
- **October 17**—*What to Expect on Election Day*. Speaker: Joseph Schwarz, former Representative to Congress and State Legislature. Introduction: **Dale Leslie**.

## Committee Meetings...

- Budget Committee; after Today's meeting; Ned's Place.
- Honorary Members Committee; after Today's meeting in Main meeting room.
- Membership Committee; after Today's meeting in Main meeting room.



# Kiwaniis®

## Kiwanis Club of Ann Arbor

*Ann Arbor News 2015 Deal of the Year Retail Award Winner*

Volume 7, Issue 52

September 26, 2016

## Today's Program...

### Club Officer and Board Installations



*Lt. Gov. Charles Phibbs*

**President Betsy Ford** introduced Lt. Governor Charlie Phibbs to handle the installation of club officers for the 2016-17 year. Lt. Governor Phibbs first swore in the new members of the Board of Directors, who will serve a 2-year term: **Kathy Barden-Perlberg, Ellen Webb, Deborah Jones, Greg Meisner, and Evan LeRoy**. Lt. Governor Phibbs also announced the continuing members of the Board: **Ray Argyle, George Gilligan, William Hampton, Joseph Medrano, and William Robb**. Finally, Lt. Governor Phibbs thanked outgoing Immediate Past-President **John Goff**, and retiring Board Members **Claire Dahl, Kenneth Shaw, Richard Smit, and Ellen Webb**, for their loyal service to the club.

Lt. Governor Phibbs then recognized and thanked the continuing Club Secretary, **Kathie Wilder**, and continuing Club Treasurer, **Eloise Lavin**, for their strong service. He also had a pin for Eloise since her service started at mid-year.

Lt. Governor Phibbs then congratulated **Gretchen Preston** as the President Elect for the coming year. He thanked **Betsy Ford** for her service as President and gave her a pin for her upcoming year of service as Immediate Past President. And last but not least, he called forward **Alan Burg** and thanked him for his upcoming service as Club President. Lt. Governor Phibbs concluded his remarks by thanking our club for the excellent service we have given to the local community.

President **Betsy Ford** then gave some farewell remarks. She said she admires and tries to copy President Obama's deliberate style of engaging his brain before starting to speak. There were many challenges during her Presidential year, starting with a request to reorganize the leadership structure of the Club. She appointed a reorganization committee and the Chair, **Mark Wishka**, presented a report to the Board last summer. She was thankful for the great assistance she received from new Treasurer, **Eloise Lavin**. Eloise changed the financial reporting system, which was very helpful as we entered our financial crisis. Things became very complicated when we lost our primary renter at KCW, Sheridan Books, in December. Our reserve funds were low and we could not continue giving to the community at the level we desired. However, she thanked all of the club members for the many forms of in-kind giving that we continued

She expressed sincere thanks for the assistance she received from Immediate Past President, **John Goff**, and President Elect, **Alan Burg**. Both provided guidance and steady advice as we worked our way through the decision to sell KCD. She also expressed special thanks to Club Secretary **Kathie Wilder** for her hard work during all of the regular and several extra meetings during the year. Also, Kathie had to handle all of the forms and other details for the 21 new members who joined the club this year. Finally, she expressed thanks to all of the club members for their help and loyalty during her Presidential year.

—More Pictures on Page 5—

## Next Week's Program...

**October 3**—*A New Music Opportunity for Kenya's School Students*. Speaker: Larry Dittmar, Honorary Member, retired teacher and Director of Orchestras at Huron High School and Clague Middle School. Introduction by **Dan Burroughs**.



**Kiwanis Club of Ann Arbor**  
CHARTERED IN 1921

### Officers and Directors

#### **President:**

Betsy Ford

#### **President-Elect:**

Alan Burg

#### **Treasurer:**

Eloise Lavin

#### **Secretary:**

Kathie Wilder

#### **Immediate Past-**

#### **President:**

John Goff

#### **Board Members:**

Ray Argyle  
Kathy Barden-Perlberg  
Claire Dahl  
George Gilligan  
William Hampton  
Joseph Medrano  
William Robb  
Kenneth Shaw  
Richard Smit  
Ellen Webb



#### **Newsletter:**

##### **Editor**

Jim Wight

##### **Photos**

Bob Gray

##### **Publisher**

John Kidle



Do you have news for the newsletter, or are you interested in advertising? Contact Publisher, John Kidle, at [jkidle@gmail.com](mailto:jkidle@gmail.com).

### **ASSIGNMENTS for the COMING WEEK:**

<b>Officer of Day KCD</b>	Mark Wishka
<b>Antiques</b>	Rose Marie Barhydt and Pat Buhner
<b>Beds &amp; Garden</b>	Ken Shaw
<b>Dockers</b>	Gordon Beeman
<b>Sorters</b>	Max Ziegler
<b>Hardware</b>	Doug Hanton, Marianne Clauw and John Dahl
<b>Men's Clothing</b>	No Info
<b>Books/Records</b>	Larry Hill
<b>Office &amp; Medical</b>	Jim Mattson and the Peanuts Gang
<b>Lamps</b>	Dennis Power and Ray Smit
<b>Electronics</b>	Bill Robb and his Betel Nuts
<b>KCW Cashiers &amp; Sales</b>	<u>Friday</u> —Ray Argyle, Gordon Beeman (OD), Nick Dever, Dave Drake, Bob Gray, Bud Roberts, Fred Sanchez, Cliff Sheldon <u>Saturday</u> —Nick Dever (OD), Al Engerer, George Gilligan, Bob Gray, Margaret Krasnoff, Eloise Lavin, Jerry McMahon, Ellen Webb
<b>KCW Sorting &amp; Pricing</b>	<u>Tuesday</u> —Bob Gray <u>Wednesday</u> —Carol Bagchi, Mike Harback <u>Thursday</u> —Page Caufield, Bob Gray <u>Friday</u> —Carol Bagchi, Janet Bloom, Marianne D'Angelo, Gary Kavanagh, Sharon Keyes, Margaret MacDonald, Glenda & Ralph Maten, Sandra Rabi-doux <u>Saturday</u> —Pamela Brown, Linda Harris, Amy Price
<b>Vouchers</b>	Ellen Webb, Jean Robinson, Rose Marie Barhydt, Matt Chaiken, Dave LaMoreaux, Max Ziegler, and Susan Smith
<b>Invocation</b>	Jane Talcott
<b>Greeters/Attend.</b>	Ann Mattson, Jerry Brown, Bill Tasch, Bryce Babcock (A)
<b>Hospitality</b>	Dale Leslie
<b>Newsletter Editor</b>	Nicole Zollinger
<b>Cashier</b>	Martha Petroski

### **Guests at Our Club...**

Introduced by **Tom Dew**. Charlie Phibbs, Western Kiwanis Club and Lt. Governor; Arno Buhner, guest of **Pat Buhner**; Christian Wire, UM Circle K. Welcome all!

### **Hospitality News...**

**Don Kossick** reported that Randy Peacock, a longtime teacher at Ann Arbor High and Ann Arbor Pioneer passed away. He taught history and was beloved by his students and faculty colleagues. **Dale Leslie** is the Hospitality contact for October.

### **Announcements...**

- **Claire Dahl** reminded the members that there is a consistent need for volunteers to help with the voucher program on Thursday mornings at KCW.
- **John Goff** said he is setting up a Town-Hall type meeting for next Monday evening to discuss details of the club's finances and the decision to sell KCD.
- **Gretchen Preston** is organizing the preparation of a new sales area at KCW. Her group needs help clearing the area so it can be prepared as a sales space. Sign-up sheets were on the tables or you can contact Gretchen directly by email. The planned work times are: Thursday (9/29) from 6 to 8pm with pizza; Saturday (10/1) from 1 to 2:30pm with snacks; Sunday (10/2) from 1 to 3pm with snacks; and Wednesday (10/5) from 6 to 8pm with pizza.
- **Alan Burg** announced the formation of two new committees. The first is the **100th Year Celebration Committee**, to be chaired by **Dale Leslie**. An assistant chair and other committee members are to be selected. The committee is to develop a plan for our anniversary celebration in 2021. The second new committee is the **Archive Committee**, to be co-chaired by **Margaret Krasnoff** and **Ken Hillenburg**. Other committee members are to be selected. Their task will be to locate, discover, organize and catalogue the records, photos, memorabilia, and historical stories of our Club and Foundation.



### Fines...

**Dan Dever** proposed a fine on all Kiwanis members who had not fined President **Betsy Ford** during her presidential year. It passed. **Nick Dever** proposed a fine on President **Betsy Ford** for essentially imposing a poll tax on all of the members who showed up to vote last week and were subsequently fined for voting. The motion passed, but the fine was paid by **Dan Dever** because President Betsy had already paid a fine. **Gerry Luke** proposed a fine on all members who were not twins. There was not a vote because everyone had already been fined, but late-arriving **Sue Dailey** agreed to pay the fine (without a vote).

### Happy Dollars...

**Jane Talcott** was happy that her granddaughter, a sophomore at MSU, has joined the rowing team. **Janet Okuley** gave a dollar to promote the idea of doubling our individual contributions to the Mott Pot when it is passed around. **Mark Wishka** was happy to have his home included on the home show tour of the Old West Side of Ann Arbor. **Dale Leslie** was also happy that Mark and Narda's home was part of the home show tour because he really enjoyed both the exterior and interior of their home. **Marianne Clauw** was happy that the national Presidential race had finally reached the 1 v. 1 debate stage. **Clarence Dukes** was happy to recall Diamond Jack Austin's store in downtown Ann Arbor. Jack is thinking about visiting the club in the near future. Clarence gave a second dollar to address some of the club members who are not happy with the result of the vote to sell the downtown Kiwanis building. The club will go on and be strong, so please reconsider your position.

**Dave Drake** gave \$12 in celebration of his birthday on Sunday. He had lunch at Holiday's restaurant and was serenaded by several of the patrons, including some members of the UM football team. **Dick Smit** gave \$2 for the enjoyable time he had last Thursday having dinner with club members at Mott's Hospital. He gave a salute to **Jim Carey**, who has helped organize this dinner for 28 years. **John Dahl** was happy for the Wisconsin football team beating MSU last Saturday. He challenged **Jim Wight** for the upcoming UM vs. Wisconsin game this week. Depending on which team wins, John or Jim will donate happy dollars to match the margin of victory for their team. **Kathy Wilder** gave a happy half-dollar for a good time at the Ark and the fact that all of the patrons serenaded **Cliff Sheldon** with Happy Birthday wishes this last weekend.

### Stuff You Should Know...

#### Social Activities:

**Martha Petroski** announced that she has a limited number of tickets for *The Full Monty* to be performed at the Encore Theater, 3126 Broad Street in Dexter. The performance will be on Sunday, October 9, at 3pm, with dinner reservations to follow. Contact Martha (734-320-0146) to secure seating at \$30 per seat. The performance is not too long, but some special seating is available.

#### Interclubs:

**Dave Drake** reported eight members of our club attended the Super Interclub hosted last Wednesday by the Kiwanis Morning Edition club.

#### 3-Minute Speech:



Gerry Luke

**Gerry Luke** gave his 3-minute speech as a new member. Gerry was born and raised on the west side of Detroit. After receiving his B.S. degree in Electrical Engineering, he worked for 35 years at Ford Motor Company. He has two children and four grandchildren. After retirement, he moved to the Polo Fields in 1999. He and his wife have done lots of travel around the globe on various tours and cruises. They enjoy playing golf and he tries to walk five miles per day.

**Kiwanis**  
Thrift Sale

Known worldwide as  
the place for the  
"funkiest" gift.

Check for Special Items  
on

**craigslist**

and



Every Week!

*Since 2004*  
*Over \$2,482,000*  
*in Proceeds from*  
*the Kiwanis*  
*Thrift Sale have*  
*been used to*  
*Benefit Our*  
*Community.*



**Lunch Time**

*Lunch is served*  
*beginning at 11:30am*  
*Come early... get a*  
*parking spot and extra*  
*time to enjoy the good*  
*food before the*  
*meeting starts at*  
*12:10pm*

# October 2016

Sun	Mon	Tue	Wed	Thu	Fri	Sat
						1 Sale & Donations: KCD 9-12 KCW 9-1
2	3 <u>Larry Dittmar</u> KCD Donations 9am-Noon	4	5	6 KCD Donations 9-12	7 Sale & Donations: KCW 9-1	8 Sale & Donations: KCD 9-12 KCW 9-1
9 3pm Encore Theater <u>The Full Monty</u>	10 <u>Hire a Vet</u> KCD Donations 9am-Noon Columbus Day	11	12	13 KCD Donations 9-12	14 Sale & Donations: KCW 9-1	15 Sale & Donations: KCD 9-12 KCW 9-1
16	17 <u>Joe Schwartz</u> KCD Donations 9am-Noon	18 Board Meeting 7pm	19	20 KCD Donations 9-12	21 Sale & Donations: KCW 9-1	22 Sale & Donations: KCD 9-12 KCW 9-1
23	24 <u>Board News</u> KCD Donations 9am-Noon	25	26	27 KCD Donations 9-12	28 Sale & Donations: KCW 9-1	29 Sale & Donations: KCD 9-12 KCW 9-1
30	31 <u>Hon. Members</u> KCD Donations 9am-Noon Halloween					

# November 2016

Sun	Mon	Tue	Wed	Thu	Fri	Sat
		1	2	3	4 Sale & Donations: KCW 9-1	5 Sale & Donations: KCD 9-12 KCW 9-1
6	7 <u>WWII Experience</u> KCD Donations 9am-Noon	8	9	10	11 Sale & Donations: KCW 9-1 Veterans Day	12 Sale & Donations: KCD 9-12 KCW 9-1
13	14 <u>Honored Volunteers</u> KCD Donations 9am-Noon	15 Board Meeting 7pm	16	17	18 Sale & Donations: KCW 9-1	19 Sale & Donations: KCD 9-12 KCW 9-1
20	21 <u>Board News</u> KCD Donations 9am-Noon	22	23	24 Thanksgiving	25 Sale & Donations: KCW 9-1	26 Sale & Donations: KCD 9-12 KCW 9-1
27	28 <u>TBD</u> KCD Donations 9am-Noon	29	30			



## This Week's Numbers

### Attendance:

80

### Fines:

\$25.01

### Happy \$:

\$30.50

### Mott Pot:

\$234

### Vouchers:

\$515

(3 Families)  
\$58,650 YTD

### Thrift Sale:

KCD:  
\$6,405KCW:  
\$5,320Other:  
\$637TOTAL:  
\$12,362



## Today's Meeting Photos...

*Division 10 Lt. Governor Charles Phibbs being introduced by President Betsy*



*Division 10 Lt. Governor Charles Phibbs installs President Alan Burg*



*Alan Burg presents President Betsy a gift from the Board for her year of service as President*



*President Betsy Ford with her Motawi Tile gift from the Board*

## Correction...

The Editor of last week's newsletter was **Dale Leslie**, not **Jim Wight** as was shown on Page 2 of that newsletter. Jim Wight is actually this week's Editor. We apologize for the error, and thank both Dale and Jim for the hard work they do on behalf of the club newsletter.

Occasionally, some hooligan will have the temerity to suggest that perhaps the Publisher should suffer some consequence for the errors, inaccuracies, and outright fabrications that—despite the gallant efforts of our weekly editors—appear in the club newsletter with distressing regularity. Persons of the ruder sort have intimated that a cavalier attitude toward basic fact gathering, editing, and proofreading at the very highest levels is the cause of these inconveniences. I say, who among us is so worthy as to cast the first blue pencil?

Nay gentle reader, until some benighted soul steps forth to take my place, I shall remain ensconced in my paneled office high among the lofty battlements of Newsletter Inc., unscathed and unperturbed—sailing on as in the words of H.L. Mencken, "like a steel ship loaded with monoliths of granite". ~Pub.

**Our Sponsored Programs  
in Service to Youth:**



*"Serving the Children of the World...our motto, our mission"*

## KIWANIS CLUB OF ANN ARBOR

### Meetings:

Mondays at Noon  
200 S. First Street  
Ann Arbor, MI 48104  
[www.a2kiwanis.org](http://www.a2kiwanis.org)

Building Phone:  
734-665-2211



### Sale and Donation Hours

#### Thrift Sale Downtown

200 S. First at Washington  
Saturdays 9am-Noon



#### Thrift Sale West

100 N. Staebler at Jackson  
Fridays and Saturdays  
9am-1pm



#### Saleable Donation Drop Off:

Downtown: Mondays, Thurs-  
days, and Saturdays  
9-11:30am

West: Fridays and Saturdays  
10am-12:30pm



Call for Donation Pickup:  
734-665-0450

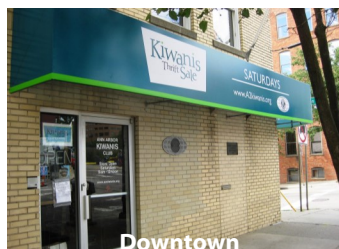


### Other Links:

- [Michigan District Kiwanis](#)  
Click [here](#) to read the latest *Michigan Builder*.
- [Kiwaniis International](#)
- [Kiwaniis Young Professionals of Washtenaw County](#) Meets 6pm first Thurs. of Month
- [U of M Circle K](#)  
Meets 7pm Thursdays at UM Union or League (Check Calendar on Website)
- [Kiwaniis Club of Ypsilanti](#)  
Meets Noon Wednesdays at EMU Student Center
- Ann Arbor Western, Meets Noon Tues. at Quarter Bistro
- [Kiwaniis Ann Arbor Morning Edition](#), Meets 8:30am 2nd & 4th Weds. at Guy Hollerin's

## "Serving the Children of the World"

Interested in becoming a member? Please send an e-mail to [MembershipGrowth@a2kiwanis.org](mailto:MembershipGrowth@a2kiwanis.org) or visit the website [www.a2kiwanis.org](http://www.a2kiwanis.org).



Downtown



West



# Kiwanis®

## Thanks to Our Advertising Supporters...



RE/MAX Platinum Realtors, Doug Ziesemer  
734-769-8111, [dfziesemer@aol.com](mailto:dfziesemer@aol.com)

Betty Jean Harper, Visiting Vet  
Veterinary Visits in YOUR Home 734-475-9474

Raymond James & Associates, Andrea Kotch Duda, CFP  
[www.RaymondJames.com/andreakotchduda](http://www.RaymondJames.com/andreakotchduda), 734-930-0555

Clarity Financial Advisors, Mark S. Wishka, ChFC, CFP, CLU, CRPC,  
CASL, REBC, RHU—734-995-3996, [markwishka.com](http://markwishka.com)

Charles Reinhart Realtors, Nathaniel Foerg, 734-834-1981  
[nfoerg@reinhartrealtors.com](mailto:nfoerg@reinhartrealtors.com)

Jim Carey Realtor®, Charles Reinhart Realtors  
734-717-5591, [jcarey@provide.net](mailto:jcarey@provide.net)